

An underwater photograph of a diver in a shipwreck. The diver is in the foreground, wearing a black wetsuit, a mask, and a yellow BCD. They are holding a flashlight. The background shows the interior of a shipwreck with wooden planks on the floor and various pipes and structures. The water is blue and slightly murky.

20 - 25 June 2016

WRECK WEEK

SPORT DIVER

NAUTIC TEAM



Volcano Street, Marsalforn
MFN 1211, Gozo, Malta
Tel: +356 21558507
www.nauticteam.com
nautic@go.net.mt



WRECK WEEK FOR SPORTS DIVER

20–25. JUNE 2016

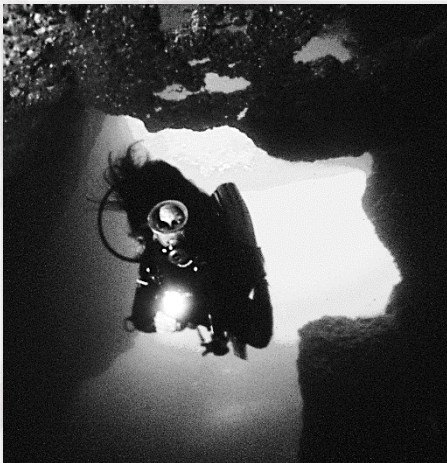
20/06/2016: DAY 1
2 SHORE DIVES FOR
ACCLIMATIZATION

Dive 1) A shallow dive to start the week.

Dive 2) **Blue Hole**

Average Depth: 12 Meter

Maximum Depth: 30 Meter



21/06/2016: DAY 2
FULL DAY BOAT TRIP TO
COMINO & MALTA INCL. 2
DIVES.

Dive 1) **Wrack der Rozi** length approx. 45 mtrs. The MV Rozi was a tugboat, built in Bristol in 1958. She was originally called Rossmore, and was later renamed Rossgarth. She was sold to Tug Malta in 1981 as the Rozi and operated in the Grand Harbour. After being decommissioned, she was scuttled off in Ċirkewwa as an artificial reef. It is now one of the most popular dive sites in Malta. The wreck lies upright on a sandy bottom, at a depth of 36 meters (118 ft.). It is intact except for its engines and propeller. The wreck is surrounded by marine life: sea breams, scorpion fish, rainbow wrasse and cardinal fish... It lies upright on a sandy seabed

Average Depth: 30 Meter

Maximum Depth: 36 Meter

Dive 2) **Wrack der Pasewalk** Was a Kondor I-class minesweeper built in East Germany. After the Volksmarine was disbanded just before the reunification of Germany, she was sold to Malta in 1992 and renamed P31 and was used as a patrol boat. After being decommissioned, she was scuttled as a dive site in 2009 off Comino. It is sitting in an upright position on a sandy seabed.

Average Depth: 12 – 18 Meter

Maximum Depth: 18 Meter





22/06/2016: DAY 3 2 SHORE DIVES IN GOZO

Dive 1) **MV CominoLand**: The ferry was scuttled as an artificial reef for scuba divers in Xatt l-Ahmar, Gozo along with MV Karwela on the 12th August 2006. The MV Cominoland is probably the second most dived wreck around Gozo. More interesting than the MV Xlendi but further away from shore, smaller than the MV Karwela, she has also some open passageways and swim troughs. In comparison to MV Karwela, the MV Cominoland was stripped off all of her outer paintwork prior to sinking to attract more marine life and growth settlement.

Average Depth: 35 - 39 Meter

Maximum Depth: 39 Meter

Dive 2) **MV Karwela**: The MV Karwela was launched as M/S Frisia II in 1957. During 1977 she was named the Nordpalomo and transferred to Malta in 1986. She then sailed for Comino Marina Ltd. until around 2002 under her present name MV Karwela. The MV Karwela ferry measures 50.30 meters by 8.50 meters and was designed to carry 863 passengers. The wreck is now fully populated with an overall coating of algae and marine invertebrates, and the sea fans along the rails are a popular feeding ground for nudibranchs. The largely calm deep water around the wreck also encourages the growth of some very large spiral tube worms (*Spirographis spallanzani*)

Average Depth: 35 Meter

Maximum Depth: 40 Meter

23/06/2016: DAY 4 FULL DAY BOAT TRIP TO COMINO & MALTA INCL. 2 DIVES.

Dive 1) **Wrack der Boltenhagen** The former minesweeper was purchased by Malta on 24th July 1997 and was given the pennant number P29. The P29 became a patrol boat within the Offshore Command of the Maritime Squadron of the Armed Forces of Malta. Since the former minesweepers were purchased unarmed, some light armament was then added by the AFM. The P29 was then used to secure the Maltese coast against smuggling and border control operations. She was decommissioned in 2004 and was bought by the Malta Tourism Authority in September 2005. She was cleaned and then scuttled on 14th August 2007 off the port of Ċirkewwa to serve as a diving site and artificial reef. The wreck now lies at a depth of around 35 meters. The highest point is situated only at 17 meters depth.

Average Depth: 32 – 37 Meter

Maximum Depth: 38 Meter - Depth of Mast top 17 Meters

Dive 2) **St. Maria Caves in Comino**





24/06/2016: DAY 5 FULL DAY BOAT TRIP TO COMINO & MALTA INCL. 2 DIVES

Dive 1) **Wrack der Imperial Eagle** Prior to coming to Malta it was registered under other names. When first launched in 1938 until 1947 she was named "New Royal Lady", then in 1948 as "Royal Lady" and thereafter until 1958 as "Crested Eagle". Built by J. Crown & Sons Ltd., in Sunderland England and powered by two diesel oil engines manufactured by Crossley Bros Ltd. After 1968 she was used to transport cargo and animals from Gozo to Valletta. She also served for storage. In Malta she was owned by Sunny & Maria Pisani, a family from Gozo, and was sold to the local diving community on the 28th November 1995 to scuttle her as an attraction for divers off Qawra Point and to form the main attraction for an Underwater Marine Park Project. A task coordinated by an action Committee set up for this purpose. It was scuttled on 19th July 1999 in 40 meters of water.

Average Depth: 35 Meter
Maximum Depth: 42 Meter

Dive 2) **Lighthouse Reef Comino:**
Maximum Depth: 10 - 30 Meter.

25/06/2016: DAY 6 DAY FOR RELAXING & DESATURATION.



Terms & Conditions relating to the Wreck Week are: min. CMAS ** or equivalent with adequate experience of dives to 40 meters . A valid medical certificate.

COST FOR THE DIVE WEEK

€ 367,-

INCLUSIVE OF BOAT TRIPS, AIR & WEIGHTS.

Minimum number of participants is a collective 6. Please enquire with us for availability on alternative dates.